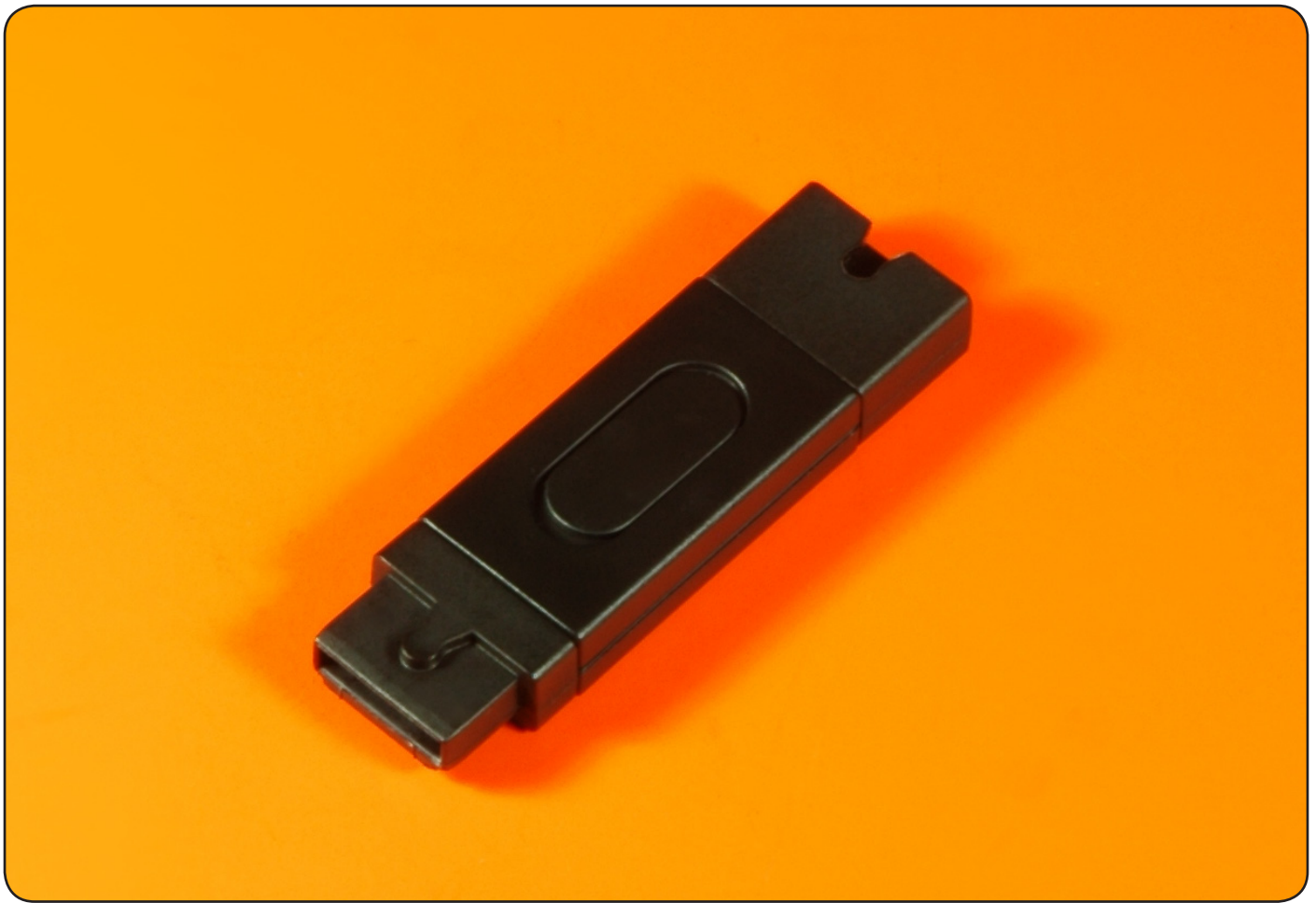




QD Mute Switch (Mute QD)



Description:

Having a mute switch like the Mute Quick Disconnect (QD) connected to your headset gives you quick easy access to a sometimes essential mute feature. The QD can easily be inserted between the headset and quick disconnect cable of any standard Accutone model. This 'one size fits all' characteristic enables one mute switch to be used across multiple Accutone products and eliminates the need to replace the Mute QD during headset upgrades. Acting as a user-friendly headset application, the Mute QD enables users to conveniently mute microphones with one quick switch, a great function for any call centre or busy office environment.

Features:

- *quick access to mute feature*
- *can be used with various Accutone products*
- *conveniently mute microphones with one quick switch*